

RESOLUTION #11-05
RESOLUTION OF THE BOARD OF COUNTY COMMISSIONERS

OF

WESTON COUNTY, WYOMING

* * *

Whereas, the Canyon Improvement & Service District presented a petition to enlarge the boundaries of the District, and

Whereas, a public hearing was held October 6, 2009, before the Board of County Commissioners of Weston County, Wyoming, in said petition for enlargement and no written or oral objections were made, and

Whereas, the Board of County Commissioners of Weston County, Wyoming, having reviewed the matter and being satisfied that the District has met all the requirements for the enlargement of the District boundaries,

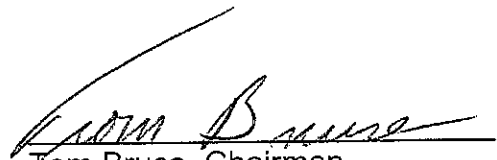
Now, Therefore, Be It Resolved By the Board Of County Commissioners of Weston County, Wyoming that the petition for enlargement of the boundaries of the Canyon Improvement & Service District be, and the same is hereby approved and confirmed, with the result that the area included within said District is now as described on Exhibit A, attached hereto and made a part hereof, which description was provided by the District.

This Resolution will confirm action already taken by the Board of County Commissioners of Weston County, Wyoming on October 6, 2009, and shall be effective as of that date.

Dated 3-15-11, 2011.

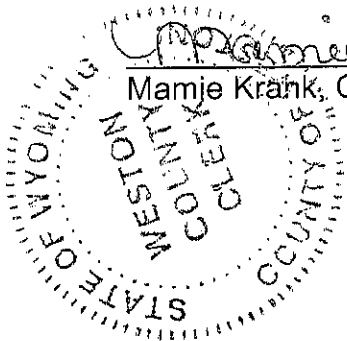
Board of County Commissioners
Of Weston County, Wyoming

By:


Tom Bruce, Chairman

Attest:


Mamje Krank, County Clerk



CANYON IMPROVEMENT
And
SERVICE DISTRICT DESCRIPTION

TOWNSHIP 45 NORTH, RANGE 60 WEST, SIXTH P.M., WESTON COUNTY,
WYOMING

SECTION 19: The S1/2 SW1/4 and the SW1/4 SE1/4;
SECTION 30: The E1/2 SW1/4, the NW1/4, and the NW1/4 NE1/4;

TOWNSHIP 45 NORTH, RANGE 61 WEST, SIXTH P.M., WESTON COUNTY,
WYOMING

SECTION 10: The W1/2 SE1/4, the SE1/4 SE1/4, and a portion of the
 E1/2 SW1/4 as described as follows: See Exhibit "A"

SECTION 11: The SW1/4 SW1/4;
SECTION 12: The W1/2 SE1/4;
SECTION 13: The E1/2 W1/2, and the W1/2 E1/2;
SECTION 14: The S1/2 NW1/4, the NW1/4 NW1/4, the N1/2 SW1/4 and the
 SW1/4 SW1/4;
SECTION 15: The NE1/4, the SE1/4, the E1/2 NW1/4 and the NE1/4 SW1/4;
SECTION 22: The NE1/4 NE1/4, the portion of the NW1/4 NE1/4 as described
 as follows: See Exhibit "B"
 and a portion of the S1/2 NE1/4 and the E1/2 SE1/4 as described
 as follows: See Exhibit "C"

SECTION 23: The S1/2, the S1/2 N1/2, the NW1/4 NW1/4 and the NE1/4 NE1/4;
SECTION 24: The NW1/4 NE1/4, the E1/2 W1/2, the NW1/4 NW1/4, the
 SW1/4 SW1/4 and the S1/2 SE1/4;
SECTION 26: The E1/2, the NW1/4, and the E1/2 SW1/4;
SECTION 35: The E1/2, the E1/2 NW1/4, the N1/2 SW1/4 and a portion of the
 S1/2 SW1/4 as described as follows: See Exhibit "D"

Said Tracts of land contain 4006 acres more or less.

EXHIBIT "A"

Commencing at a B.L.M. brass cap marking the S1/4 corner of Section 10, T45N, R61W, Weston County, Wyoming said cap being the point of beginning;

Thence S 89°32'03" W for a distance of 313.89 feet to a cap;

Thence N 13°45'07" W for a distance of 418.01 feet to a cap;

Thence N 11°13'53" W for a distance of 237.41 feet to a cap;

Thence N 26°29'27" E for a distance of 435.13 feet to a cap;

Thence N 15°02'49" W for a distance of 284.93 feet to a cap;

Thence N 89°33'03" W for a distance of 243.96 feet to a cap;

Thence N 28°31'40" W for a distance of 1497.63 feet to a cap;

Thence S 89°46'47" E for a distance of 1305.38 feet to the S-C 1/16 Corner of Section 10;

Thence S 00°08'57" W for a distance of 2613.81 feet to a B.L.M. brass cap and the point of beginning.

Said Tract contains 39.43 acres more or less.

EXHIBIT "B"

Commencing at a B.L.M. brass cap marking the N1/4 corner of Section 22, T45N, R61W, Weston County, Wyoming and is the point of beginning;

Thence S 89°24'44" E for a distance of 1304.78 feet to an aluminum capped rebar;

Thence S 00°12'37" W for a distance of 1313.75 feet to an aluminum capped rebar;

Thence N 89°22'08" W for a distance of 608.10 feet to an aluminum capped rebar;

Thence N 41°36'38" W for a distance of 1046.84 feet to an aluminum capped rebar;

Thence N 00°21'22" E for a distance of 537.74 feet to a B.L.M. brass cap and the point of beginning.

Said Tract contains 33.16 acres more or less.

EXHIBIT "C"

Commencing at an aluminum capped rebar laying N 00°04'41" E for a distance of 610.97 feet from a B.L.M. brass cap marking the SE corner of Section 22, T45N, R61W, Weston County, Wyoming said aluminum cap being the point of beginning;

Thence N 57°28'36" W for a distance of 1014.81 feet to an aluminum capped rebar;

Thence N 20°57'44" W for a distance of 651.18 feet to an aluminum capped rebar;

Thence N 05°03'03" E for a distance of 948.84 feet to an aluminum capped rebar;

Thence N 08°13'59" W for a distance of 493.72 feet to an aluminum capped rebar;

Thence N 71°06'41" W for a distance of 504.36 feet to an aluminum capped rebar;

Thence N 06°29'43" W for a distance of 604.65 feet to an aluminum capped rebar;

Thence S 89°21'31" E for a distance of 317.82 feet to an aluminum capped rebar;

Thence S 89°20'59" E for a distance of 1308.75 feet to an aluminum capped rebar;

Thence S 00°04'41" W for a distance of 3333.39 feet to an aluminum capped rebar and the point of beginning.

Said Tract contains 80.05 acres more or less.

EXHIBIT "D"

Commencing at a B.L.M. brass cap marking the S1/4 corner of Section 35, T45N, R61W, Weston County, Wyoming and is the point of beginning;

Thence S 88°45'00" W for a distance of 820.21 feet to an aluminum capped rebar;

Thence N 41°03'30" W for a distance of 1394.05 feet to an aluminum capped rebar;

Thence S 48°56'30" W for a distance of 437.40 feet to a point on the north boundary of U.S. Highway 16;

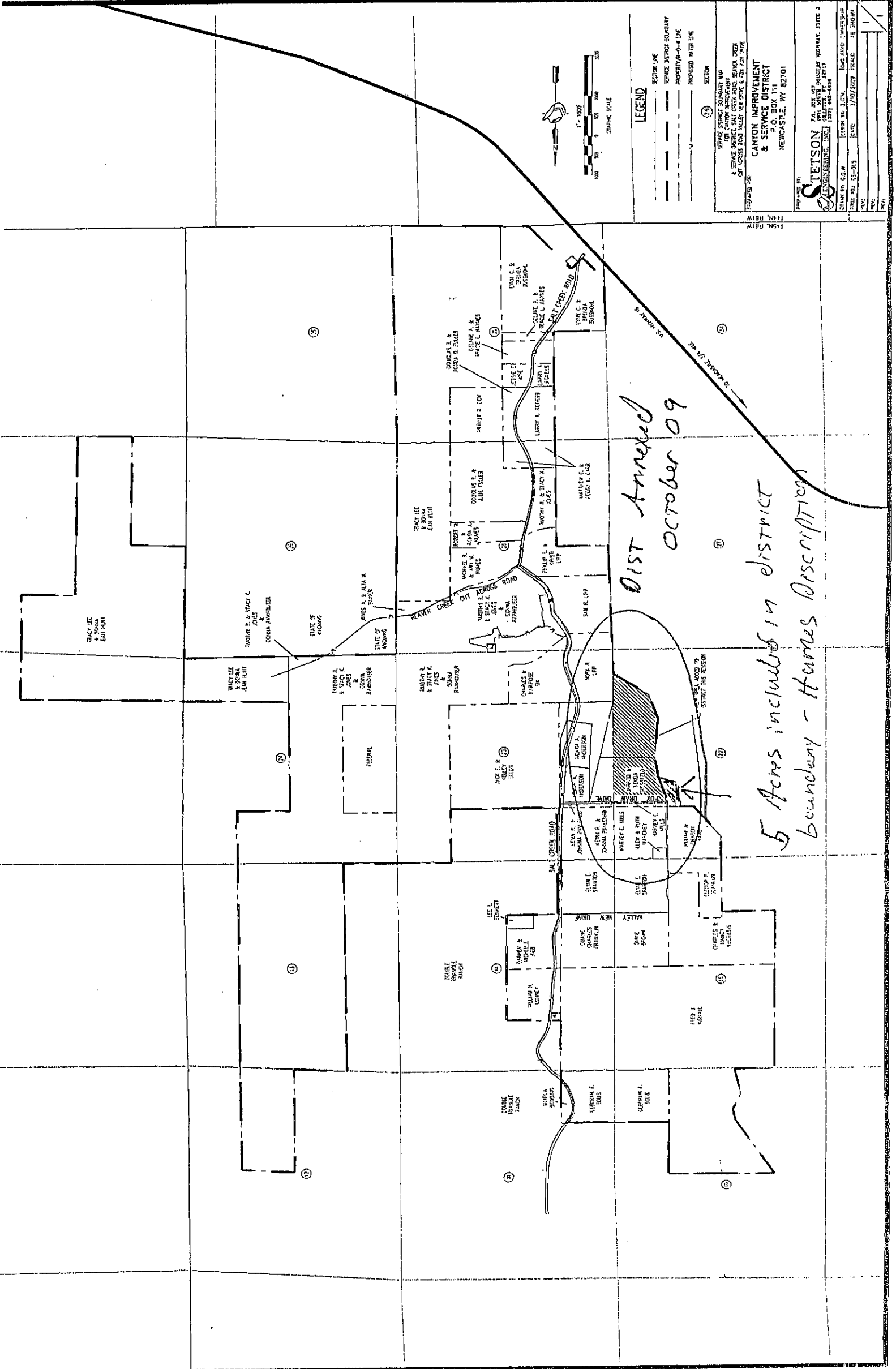
Thence N 41°03'30" W for a distance of 702.88 feet to intersect the west boundary of Section 35;

Thence N 01°07'00" W for a distance of 18.67 feet to the NW corner of the SW1/4 SW1/4 of Section 35;

Thence N 88°57'59" E for a distance of 2524.12 feet to the NE corner of the SE1/4 SW1/4 of Section 35;

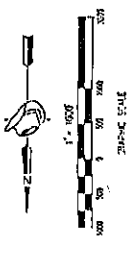
Thence S 00°09'37" E for a distance of 1340.19 feet to a B.L.M. brass cap and the point of beginning.

Said Tract contains 48.42 acres more or less.



*DIST Annexed
OCTOBER 09*

*5 Acres includes in district
boundary - Harries Description*



LEGEND

	SECTION LINE
	SERVICE DISTRICT BOUNDARY
	PROPERTY-P-4-4 LINE
	PROPOSED WATER LINE
	SECTION

PREPARED FOR:
 SERVICE DISTRICT BOUNDARY MAP
 OF CANYON IMPROVEMENT
 DISTRICT NO. 1
 1500 N. 1000 EAST
 SALT LAKE CITY, UTAH 84119

PREPARED BY:
**CANYON IMPROVEMENT
& SERVICE DISTRICT**
 P.O. BOX 111
 NEWCASTLE, WY 82701

PROJECT NO.:
 DISTRICT BOUNDARY MAP NO. 1
 SHEET NO.: 1 OF 1

DRAWN BY: J.S.M.
 CHECKED BY: J.S.M.
 DATE: 3/10/2009
 SCALE: AS SHOWN

STETSON ENGINEERING, INC.
 P.O. BOX 407
 1501 WEST 2000 SOUTH
 SALT LAKE CITY, UTAH 84119

COUNTY COMMISSIONERS
TOM W. BRUCE - CHAIRMAN

RANDY ROSSMAN
MARTY ERTMAN

JERRY SHEPPERSON
LENARD D. SEELEY

CLERK OF COURT
SANDRA WALFORD
COUNTY ATTORNEY
DONALD B. HANSEN
COUNTY SHERIFF
BRYAN COLVARD

COUNTY OF WESTON

1 W. MAIN STREET
NEWCASTLE, WY 82701

COUNTY CLERK
MAMIE C. KRANK
COUNTY ASSESSOR
TINA CONKLIN
COUNTY TREASURER
SUSAN OVERMAN

March 8, 2011

Canyon Improvement and Service District
372 Salt Creek Rd
Newcastle, WY 82701

RE: Petition for Enlarging
Canyon Improvement and Service District

After reviewing our records and the updated legal description for C I & S, we have found that the enlargement of the Canyon Improvement and Service District does not conflict with the boundaries of any other Improvement & Service District in Weston County.

If you have any questions or concerns, please contact us at
307-746-4633.

Sincerely,



Tina Conklin
Weston County Assessor

COUNTY COMMISSIONERS
TOM BRUCE - CHAIRMAN

ALAN L. TODD
RANDY ROSSMAN

GLEN HUTT
JERRY SHEPPERSON

CLERK OF COURT
SANDRA WALFORD
COUNTY ATTORNEY
DONALD B. HANSEN
COUNTY SHERIFF
BILL WARE

COUNTY OF WESTON

1 W. MAIN STREET
NEWCASTLE, WY 82701

COUNTY CLERK
PAULETTE THOMPSON
COUNTY ASSESSOR
TINA CONKLIN
COUNTY TREASURER
JOYCE AVERY

July 27, 2009

Canyon Improvement and Service District
372 Salt Creek Rd
Newcastle, WY 82701

RE: Petition for Enlarging
Canyon Improvement and Service District

The records in the office of the Weston County Assessor show the petitioners are the land owners of the lands being annexed into the Canyon Improvement and Service District.

This enlargement of the Canyon Improvement and Service District does not conflict with the boundaries of any other district in Weston County.

If you have any questions or concerns, please contact us at 307-746-4633.

Sincerely,



Tina Conklin
Weston County Assessor